

Specs		Array Ceiling AC2		Array Recess AR1			Array Recess AR2			Array Recess AR1 UVC			Array AW1 & AS1			Array AW2 & AS2			Array Signal	Array Lookout				
Area Coverage (SQFT)		Ceiling Height (ft)		Ceiling Height (ft)			Ceiling Height (ft)			Ceiling Height (ft)			Ceiling Height (ft)			Ceiling Height (ft)			Ceiling Height (ft)	Ceiling Height (ft)				
		10	12	8	10	12	8	10	12	8	10	12	8	10	12	8	10	12	—	—				
eACH	1	4,290	3,575	2,250	1,800	1,500	4,500	3,600	3,000	900	720	600	1,800	1,440	1,200	3,000	2,440	2,000	—	—				
	3	1,430	1,191	750	600	500	1,500	1,200	1,000	300	240	200	600	480	400	1,000	800	666	—	—				
	5	858	715	450	360	300	900	720	600	180	144	120	360	288	240	600	480	400	—	—				
Product code																								
Fan Speeds (CFM)		136, 186, 333, 504, 715		60, 80, 134, 201, 300			114, 153, 264, 391, 600			120			68, 90, 110, 140, 240			120, 150, 200, 260, 400			—	—				
Sound pressure levels, each fan speed (dB)		29, 31, 43, 48, 56		24, 26, 33, 44, 50			26, 27, 36, 47, 54			43			AS1: 29, 34, 38, 44, 57 AW1: 28, 33, 38, 44, 56			AS2: 28, 34, 39, 45, 58 AW2: 27, 33, 37, 44, 58			—	—				
Power Requirements (V/Hz/A)		AC120V/60Hz/1.2A		AC120V/60Hz/0.8A			AC120V/60Hz/1.5A			AC120V/60Hz/0.9A			AC120V/60Hz/0.9A			AC120V/60Hz/1.5A			AC120V/60Hz/0.50A (Hardwire) AC120V/60Hz/1.0A (Plug)	AC120V/60Hz/0.70A (Hardwire) AC120V/60Hz/1.30A (Plug)				
Power Consumption (Watts)		11, 13, 24, 26, 120		7, 8, 13, 24, 62			9, 12, 23, 45, 120			77			8, 11, 16, 28, 107			10, 14, 23, 41, 173			12.5 W (Hardwire) 20 W (Plug)	36 W (Hardwire) 36 W (Plug)				
EnviroSmart™ Technology (particulates (PM10, PM2.5), occupancy, temperature, humidity (rH), carbon dioxide (CO2), pressure, TVOCs, light and sound detection)		✓		✓			✓			—			✓			✓			Yes except for occupancy sensors	—				
IoT Connectivity		LTE		LTE			LTE			LTE			LTE			LTE			LTE	LTE				
Modes		Auto, Quiet, Manual		Auto, Quiet, Manual			Auto, Quiet, Manual			Manual - 1 Speed			Auto, Quiet, Manual			Auto, Quiet, Manual			—	—				
Filter change indicator		Yes		Yes			Yes			Yes			Yes			Yes			—	—				
Air Intake		Bottom, Top		Bottom			Bottom			Bottom			Bottom, Sides			Bottom, Sides			—	—				
Air Outlet		Sides		Bottom			Bottom			Bottom			Top			Top			—	—				
Warranty		5 Years		5 Years			5 Years			3 Years			5 Years			5 Years			3 Years	3 Years				
Product Dimension (L x W x H) (in)		49 x 12.7 x 14.3		23.4 x 23.4 x 12.4			47.3 x 23.6 x 12.4			47.2 x 23.3 x 11			20.9 x 9.7 x 19.6 (AW1) 20.9 x 10.2 x 22.8 (AS1)			34.7 x 9.4 x 19.7 (AW/2) 34.7 x 10.6 x 22.8 (AS2)			5.0 x 5.0 x 3.1 (Hardwire) 4.2 x 4.2 x 1.7 (Plug)	2.4 x 6.7 x 5.6 (Hardwire) 3.1 x 6.7 x 5.6 (Plug)				
Weight (lbs)		47		40.3			76.1			62.6			20 (AW1), 25 (AS1)			35 (AW2), 40 (AS2)			0.9 lbs (Hardwire) 0.4 lbs (Plug)	1.86 (Wall) 1.17 (Stand)				
Electrical Connection		Plug		Hardwire			Hardwire			Hardwire			Hardwire (AW1), Plug (AS1)			Hardwire (AW2), Plug (AS2)			Hardwire (In-wall) Plug (Stand)	Hardwire (Wall) Plug (Stand)				
Certifications																								
UL507		✓		✓			✓			✓			✓			✓			—	—				
CARB		✓		✓			✓			✓			✓			✓			—	—				
FCC		✓		✓			✓			—			✓			✓			✓	✓*				
EN1822M		✓		✓			✓			—			✓			✓								
Virus Effectiveness																								
H1N1		✓		✓			✓			✓			✓			✓								
Rhinovirus		✓		✓			✓			✓			✓			✓								
SARS-CoV-2*		✓		✓			✓			—			✓			✓								
Protect your Purifier! To ensure stated performance and efficacy of your Fellowes air purifier, only use genuine Fellowes branded filters. Off-brand filters may damage and affect the performance of your unit and void your unit's warranty.																			<div>Fellowes Array BMS Integration Components</div> <div>BACnet/IP Used in more than 80% of projects in the US, BACnet/IP supports integrating real-time air quality data into existing BMS/BAS to reduce energy costs and maximize building efficiency.</div> <div> </div> <div>Ethernet Transmit data using ethernet cable and receive firmware updates.</div> <div>Array® Relay BACnet/IP enabled gateway transmits data from Fellowes Viewpoint Plus to your BMS/BAS.</div>					
Filter & UV Replacements																								
Filter Type		3-in-1 360° (Pre-Filter, Carbon, H13 True HEPA)		3-in-1 360° (Pre-Filter, Carbon, H13 True HEPA)			3-in-1 360° (Pre-Filter, Carbon, H13 True HEPA)			UVC Bulb UVC Bulb Bundle**			Hybrid Filter (Carbon, H13 True HEPA)			Hybrid Filter (Carbon, H13 True HEPA)								
Filter Code																								
Filter Rating		H13 True HEPA		H13 True HEPA			H13 True HEPA			—			H13 True HEPA			H13 True HEPA								
Filter Efficiency		99.95% @ 0.1 microns		99.95% @ 0.1 microns			99.95% @ 0.1 microns			Up to 98.1% Single Pass Kill Rate***			99.95% @ 0.1 microns			99.95% @ 0.1 microns								
Antimicrobial Coating		✓		✓			✓			—			✓			✓								
Estimated Life		1 Year		1 Year			1 Year			1 Year/9000 Hours			1 Year			1 Year								
Pack Size		2		1			2			1			1			2								

\* Subject to final compliance certificate    \*\* Includes Pre-Filter  
\*\*\*Based on 98.1% Single Pass Reduction in Staphylococcus epidermidis bacteria. The term "Kill" is used to represent the inactivation of pathogens from the UV-C light.

Fellowes Array BMS Integration Components

BACnet/IP

Used in more than 80% of projects in the US, BACnet/IP supports integrating real-time air quality data into existing BMS/BAS to reduce energy costs and maximize building efficiency.

BACnet® is a trademark of ASHRAE  
\*Pending final test results

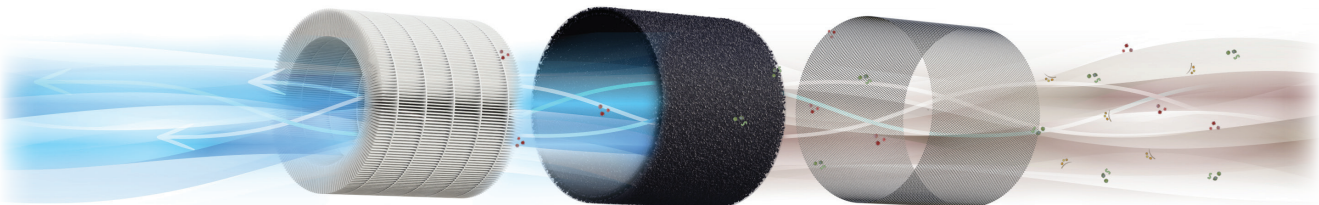
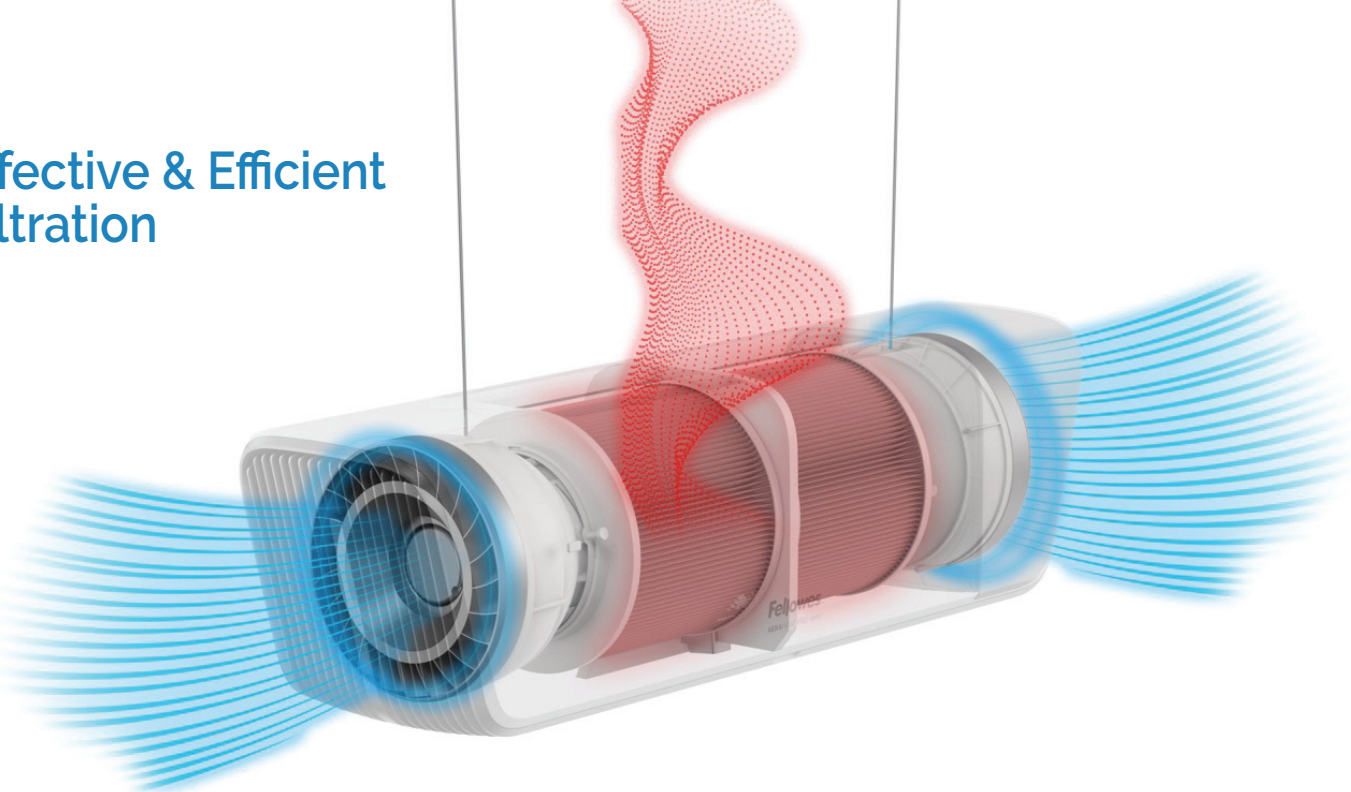
Ethernet

Transmit data using ethernet cable and receive firmware updates.

Array® Relay

BACnet/IP enabled gateway transmits data from Fellowes Viewpoint Plus to your BMS/BAS.

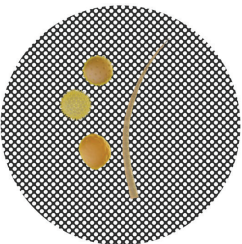
Effective & Efficient Filtration



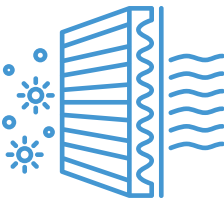
HEPA Filter



Carbon Filter



Pre Filter



Our 3-in-1 filter is 99.95% effective in capturing particles as small as 0.1 microns including viruses, allergens and germs. The mixed-flow fan design maximizes air flow while delivering quiet operation.

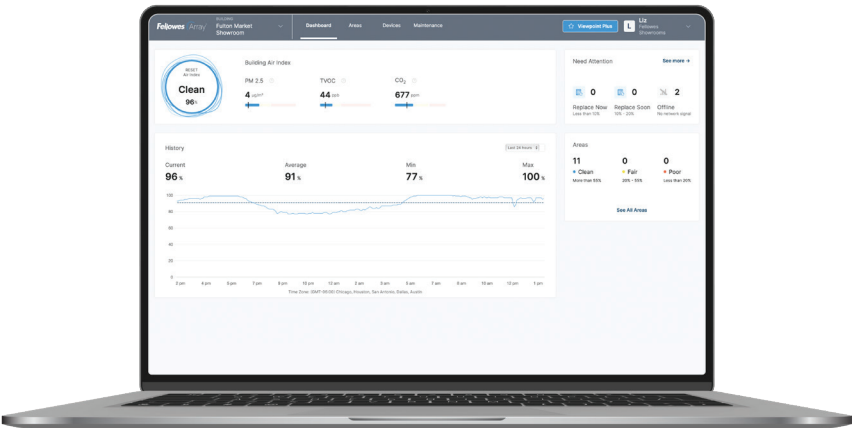
- Designed for demanding, continuous use, Fellowes filters feature a one year filter life
- UVC enabled units kill bacteria, viruses, VOCs, and other airborne contaminants



Scan to access the Viewpoint Terms & Conditions



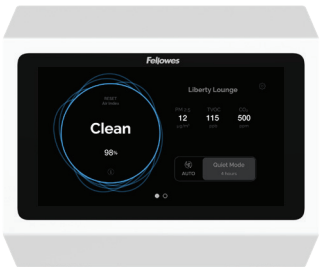
Array Monitoring & Real Time Data



Array® Viewpoint

Data-Informed Decisions

Access to Array® Viewpoint, designed to give users comprehensive visibility into their building's air quality, is included currently at no charge.\* All units connect through building-wide, secure LTE. Viewpoint continuously monitors and visualizes trends of the top air quality factors including particulates (PM10, PM2.5), occupancy, temperature, humidity (RH), carbon dioxide (CO2), pressure, and TVOCs.



Array® Lookout

The Invisible, Now Visible

Lookout's display shows precise air quality status and filtration progress. Now, anyone can have confidence in their workspace's air quality.



Array® Signal

Monitor Any Space

Signal provides remote monitoring for areas without a dedicated air purifier. Place in smaller offices, transitional areas, or anywhere else without proper ventilation or air monitoring.

RESET Air Class B IAQ Sensors	Accuracy
PM2.5 PM10	≤ 100µg/m³: ± 15µg/m³ > 100µg/m³: ± 15%
CO2	± (30ppm+3%)
VOC/TVOC	± 30ppm
Temperature	0.2C
RH	1.80%

\*See Viewpoint Terms & Conditions