



Triumph™ LX Disc Base

Electric Height Adjustable Disc Foot Table Base



Available Base Finishes

- Silver - SLV
- Black - BLK
- White - WHT

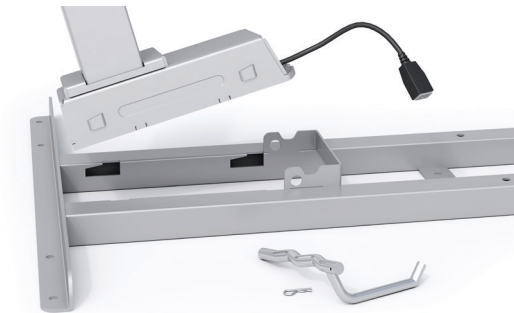
Model Numbers

2T-LX-C48Z-T30D-SLV
2T-LX-C48Z-T30D-BLK
2T-LX-C48Z-T30D-WHT

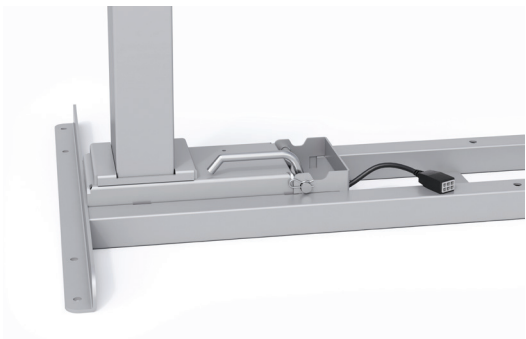
Product Specs

- Designed to accommodate P-Top worksurfaces
- Electric height adjustment
- 250 lb. base lifting capacity
- 1.4"/sec. adjustment speed
- 17.0" height adjustment range
 - 26.5"-43.5"(low/high)
 - (excluding worksurface)
- Two stage adjustable legs
- One 30" T-Foot, One 26" Diameter Disc Foot
- Frame and column connect and lock for quick and easy assembly
- Adjustable width frame accommodates the following worksurface dimensions:
 - Minimum:
52" w x 30" d x 28" d (diameter)
 - Maximum:
77.4" w x 30" d x 28" d (diameter)
- Two motors
- Digital keypad with three memory settings
- Soft start and stop
- Gyro sensor anti-collision
- ADA compliant
- 8'9" power cord
- Steel frame and foot construction
- Works with peds or storage with 23.5" max. height
- Low standby power consumption
- Meets or exceeds BIFMA x5.5 guidelines
- Keypad can slide under worksurface to store out of the way

Triumph™ LX Disc Base



Connect and Lock Pre-Assembly



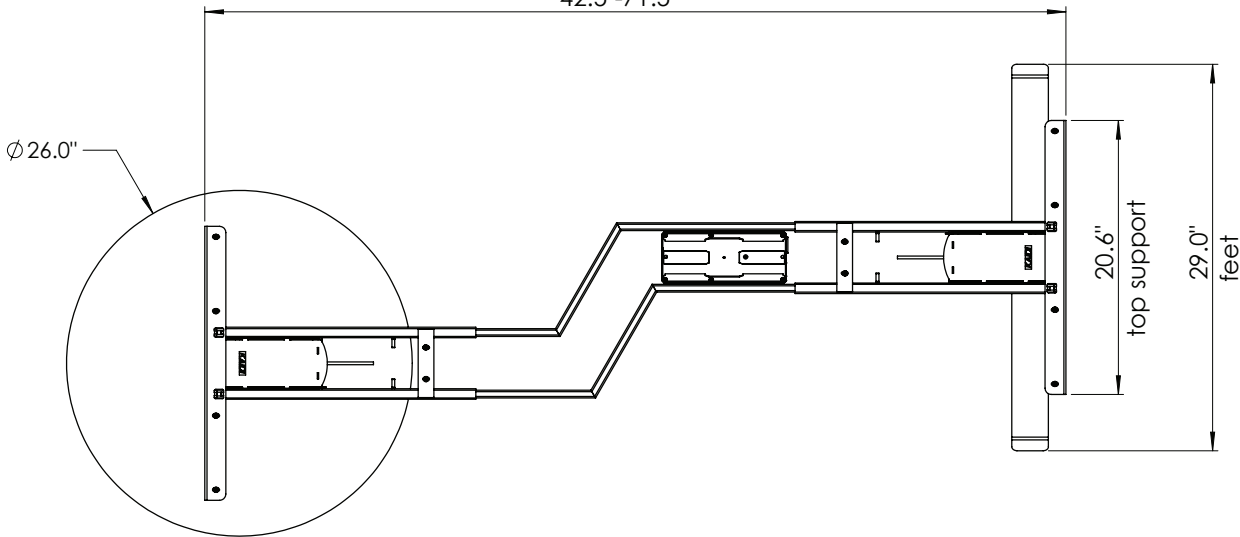
Connect and Lock Assembled



Digital 3 Memory Keypad

2T-LX-C48Z-T30D

adjustable width
42.5"-71.5"



The base dimensions as shown are actual.