

# Fellowes® Array®

INTELLIGENT AIR QUALITY





# Creating Healthy Spaces Without Compromising Energy Efficiency

Building managers today face a dual challenge: maintaining healthy indoor environments while keeping energy costs under control. With rising expectations for indoor air quality and increasing pressure to reduce energy consumption, the key is finding the right balance.

**Traditional ventilation strategies** often rely on flooding a space with outdoor air to dilute contaminants. While effective in theory, this method can be energy-intensive—forcing HVAC systems to work harder to heat or cool outside air. The result? Higher utility bills and a larger carbon footprint.

**Intelligent air quality solutions** are changing the game. By combining high-performance air purification with data-driven ventilation, buildings can remove airborne contaminants at the source without excessive reliance on outside air. This targeted approach reduces HVAC load, supports decarbonization goals, and helps extend equipment life.

It's not just about compliance or comfort—it's about creating an environment where people can thrive. Cleaner indoor air has been proven time and again to lead to fewer sick days, improved cognitive performance, and greater occupant confidence. And with the right IAQ system in place, you don't have to sacrifice energy efficiency to get there.





# IAQP: A Smarter Approach to Ventilation and Air Quality

As the industry embraces smarter, more targeted IAQ strategies, many professionals are reconsidering the limitations of traditional ventilation codes. Rather than relying solely on maximum outdoor air rates, forward-thinking organizations are exploring performance-based alternatives that maintain healthy air while minimizing energy waste.

The Indoor Air Quality Procedure (IAQP), outlined in ASHRAE Standard 62.1, offers an alternative to the traditional Ventilation Rate Procedure (VRP). Rather than relying solely on fixed outdoor air rates, IAQP takes a performance-based approach—one that evaluates actual contaminant levels and incorporates advanced air cleaning technologies, source control, and real-time monitoring to maintain acceptable indoor air quality.

This flexibility allows building owners and operators to design systems that are both efficient and effective, tailoring ventilation to real-world conditions rather than theoretical assumptions.

### IAQP unlocks the potential to:

- Reduce Energy Use: Lower outdoor air requirements mean less demand on HVAC systems to heat, cool, and dehumidify incoming air—significantly reducing energy consumption.
- Improve Air Quality: Targeted filtration and air cleaning address specific pollutants, often resulting in better indoor air than with outdoor air dilution alone.
- Enhance Occupant Well-being: Cleaner air supports cognitive function, comfort, and overall health—key factors in productivity and satisfaction.
- Support Sustainability Goals: By optimizing ventilation strategies, IAQP helps organizations reduce their carbon footprint and meet green building certification standards.
- Enable Data-Driven Design: Real-time contaminant monitoring ensures performance and compliance over time, moving beyond “set it and forget it” ventilation.

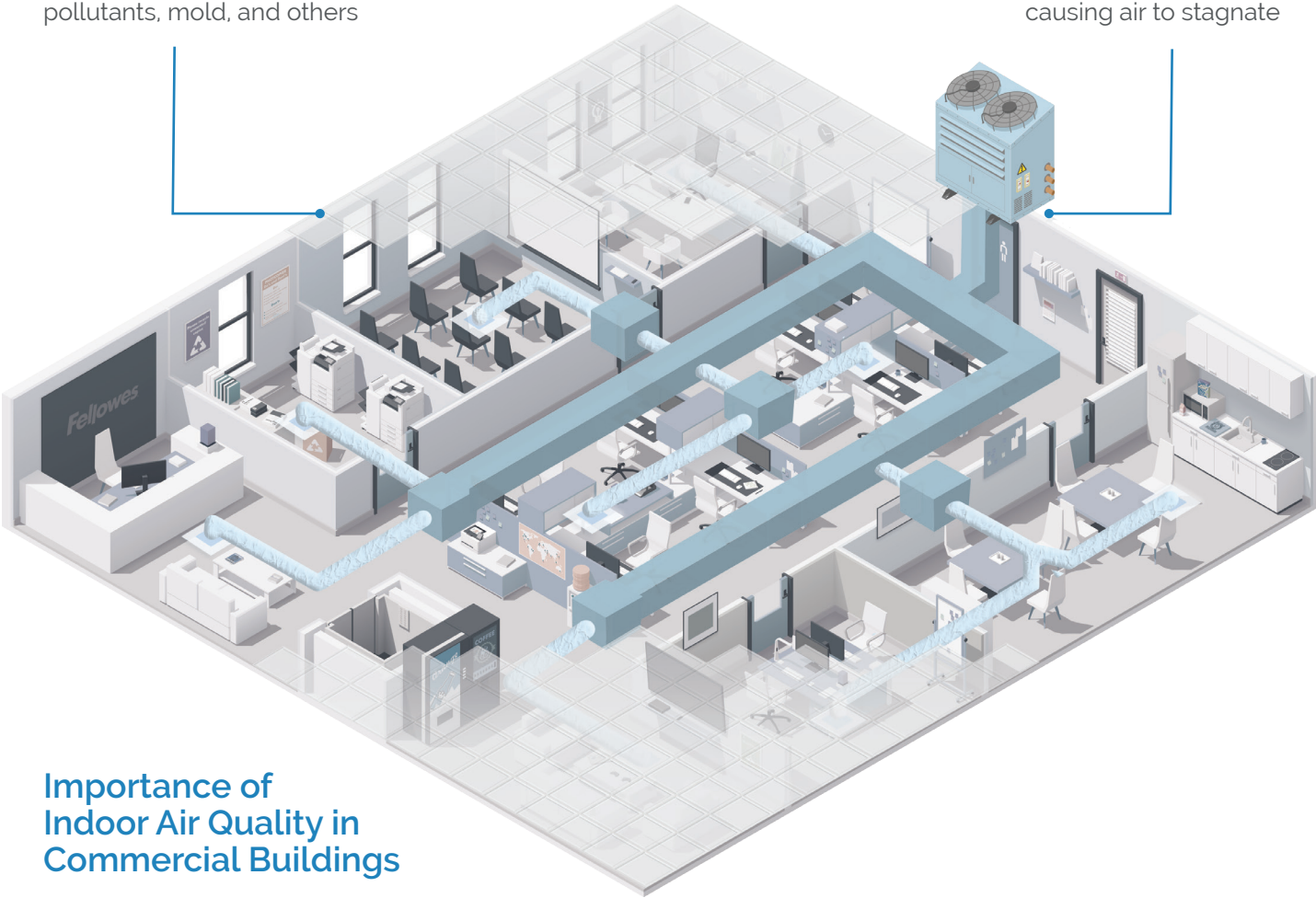


# The Insight of Air Monitoring

There are over 5.9 million commercial buildings, totaling over 97 billion square feet in the US alone. In a post-COVID environment, many organizations and property managers are looking to redesign, reconfigure and reimagine their spaces. These new spaces may have different ventilation and air quality requirements than what they were originally designed for.

**70%** more contaminants in indoor air due to people, cleaning supplies, building materials, outdoor pollutants, mold, and others

Most HVAC systems recirculate air to boost energy efficiency. However, this does not always occur evenly, causing air to stagnate



## Importance of Indoor Air Quality in Commercial Buildings

While this may seem straightforward, building managers are challenged with trying to balance thermal comfort, increased ventilation and improved IAQ while trying to manage the bottom line.

In January 2021, ASHRAE provided updated COVID-19 guidance that indicated ventilation, filtration, and air cleaners could be combined to deliver “equivalent air changes” to achieve improved IAQ.

**It's time to reevaluate the technologies available to solve these challenges.** Fellowes recognizes the need for a new category of IAQ—one that re-imagines air purification as more than just a hardware upgrade. This new approach must offer the flexibility and efficacy of individual air purifiers, the sophistication to work alongside HVAC systems, and—with BMS integration—the intelligence to drive building-wide action through connected air monitoring and automation.





## INTELLIGENT AIR QUALITY

Fellowes Array is a first-of-its-kind indoor air quality solution that brings together advanced sensing, real-time data, and responsive purification across your entire facility.

Powered by patented EnviroSmart+™ Technology, Array continuously monitors occupancy and air quality in every zone — adjusting airflow and filtration to address contaminants as conditions change. With H13 True HEPA filtration, it delivers 3–5 additional equivalent air changes per hour (eACH), enhancing ventilation effectiveness while reducing strain on HVAC systems and energy use.

Unlike standalone units, Array connects across your building to work in sync with your existing HVAC.

With access to the Viewpoint dashboard, you gain real-time visibility into air quality performance across every space. Together with Array, you're empowered to:

- Monitor indoor air quality with room-by-room precision
- Mitigate airborne risks based on real-time conditions
- Manage performance at scale across your entire portfolio

For facilities looking to further integrate IAQ into their building operations, optional BMS integration unlocks deeper system connectivity, centralized control and further efficiencies.

Array sets a new standard for intelligent air quality — helping you create healthier, more efficient spaces.







## Energy Cost Savings

Array enhances indoor air quality while reducing energy demand. With high-efficiency filtration and reduced reliance on energy-intensive ventilation, it supports HVAC efficiency, lowers costs, and delivers cleaner air without unnecessary strain on your system. With BMS integration, you can unlock even greater efficiencies and cost savings through automated, data-driven ventilation adjustments.

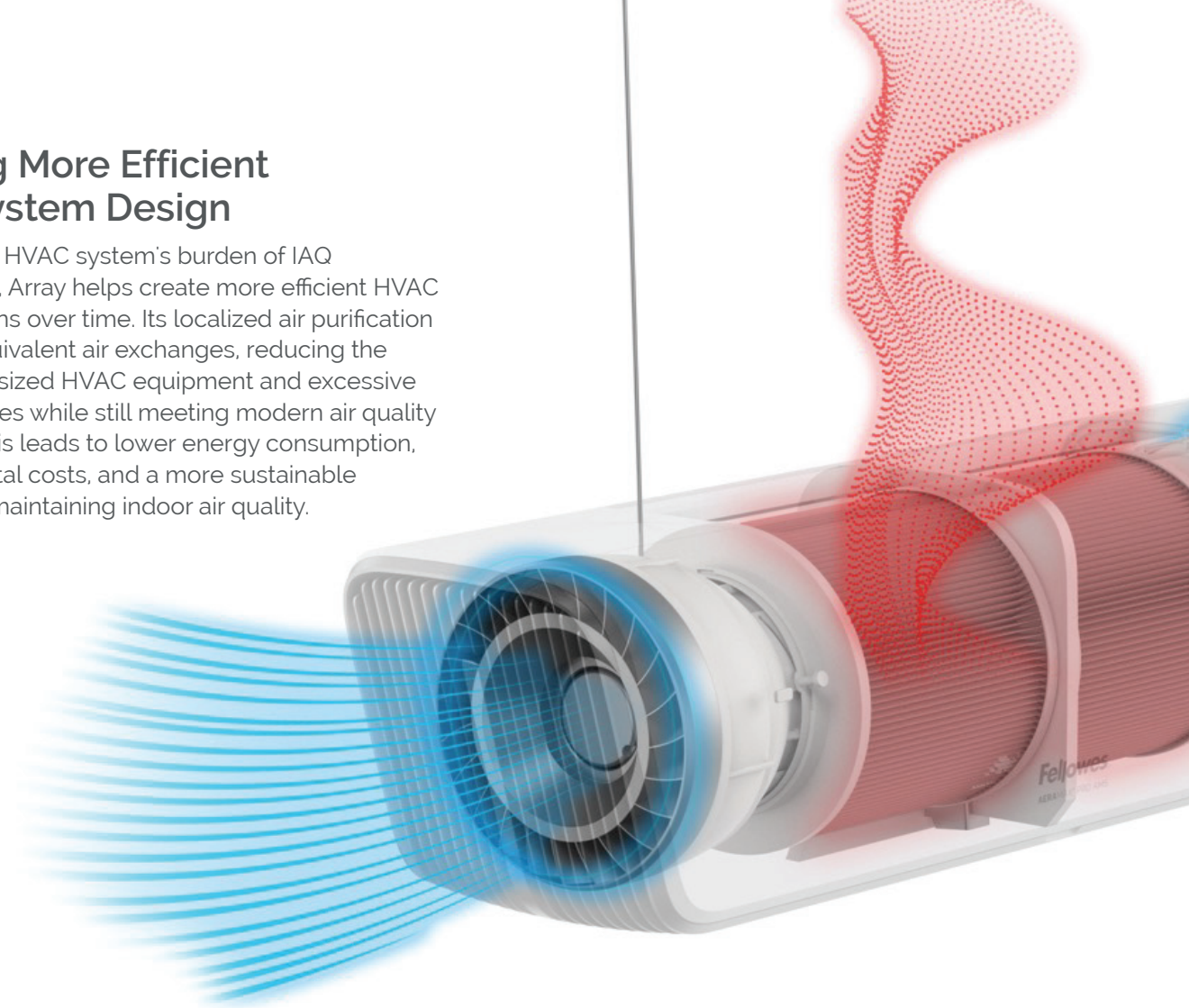
## Informed Ventilation, Energy Savings

Array reduces the need for increased ventilation rates by leveraging treated, localized air rather than continuously brining in and conditioning large volumes of outdoor air. By providing real-time IAQ data, Array enables HVAC systems to make precise, demand-based adjustments, optimizing airflow and reducing unnecessary energy consumption. This not only lowers operational costs but also extends equipment lifespan, improves overall efficiency, and ensures a healthier indoor environment without overburdening HVAC systems.



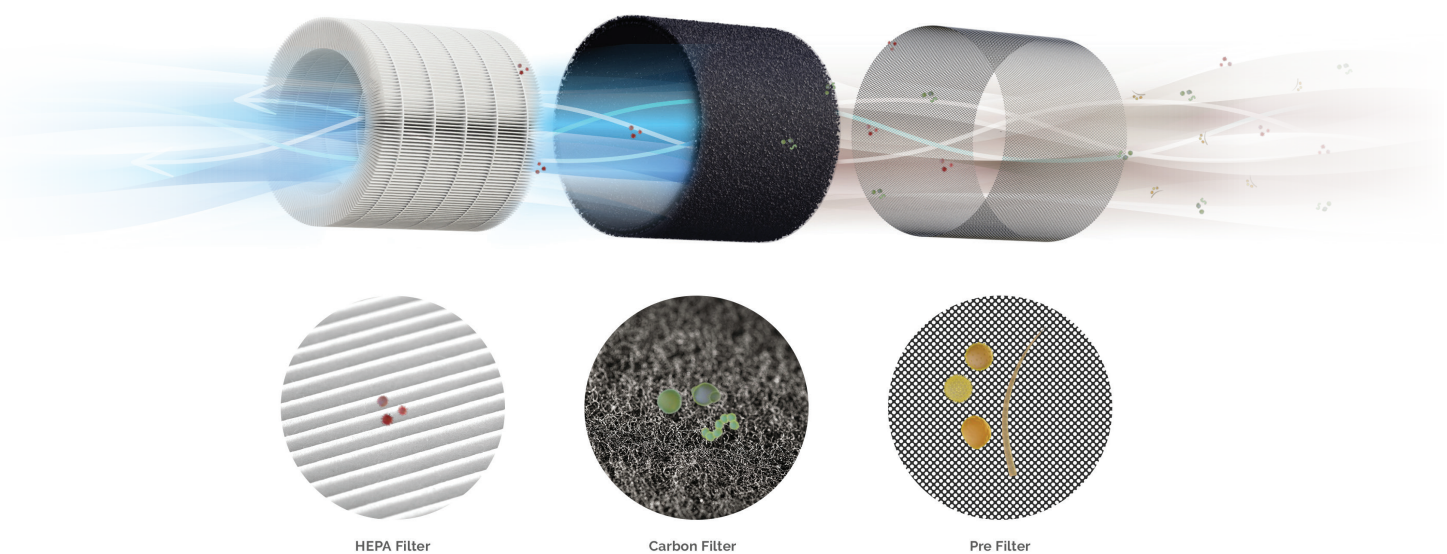
## Enabling More Efficient HVAC System Design

By easing the HVAC system's burden of IAQ management, Array helps create more efficient HVAC system designs over time. Its localized air purification increases equivalent air exchanges, reducing the need for oversized HVAC equipment and excessive ventilation rates while still meeting modern air quality standards. This leads to lower energy consumption, reduced capital costs, and a more sustainable approach to maintaining indoor air quality.



## High-Efficiency Filtration Without The Energy Burden

Array's H13 True HEPA filters provide effective air purification without the high energy demands of MERV 13 ventilation. Array's localized purification captures airborne contaminants at the source even more effectively. This reduces the need for HVAC systems to increase forced-air filtration through denser filter materials,



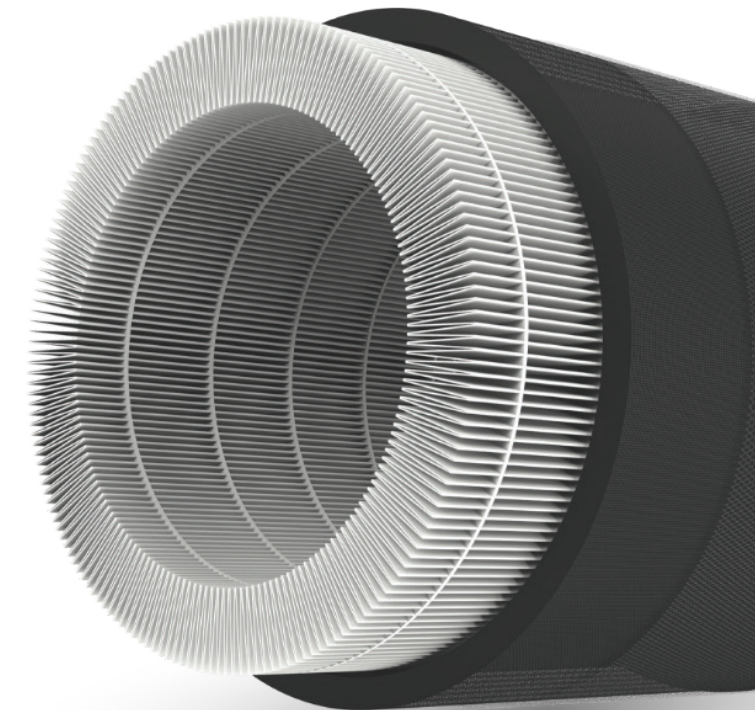




## Clean Air Ensured with Effective & Efficient Filtration

Our 3-in-1 filter is 99.95% effective in capturing particles as small as 0.1 microns including viruses, allergens and germs. The mixed-flow fan design maximizes air flow while delivering quiet operation.

- 1 Pre-Filter**  
Captures larger particles like hair, pollen, and dust
- 2 Activated Carbon Filter**  
Absorbs small particles like volatile organic compounds (VOCs), odors and some gases
- 3 H13 True HEPA Filter**  
Captures 99.95% of particles as small as 0.1 microns like germs, viruses, allergens, smoke, and bacteria

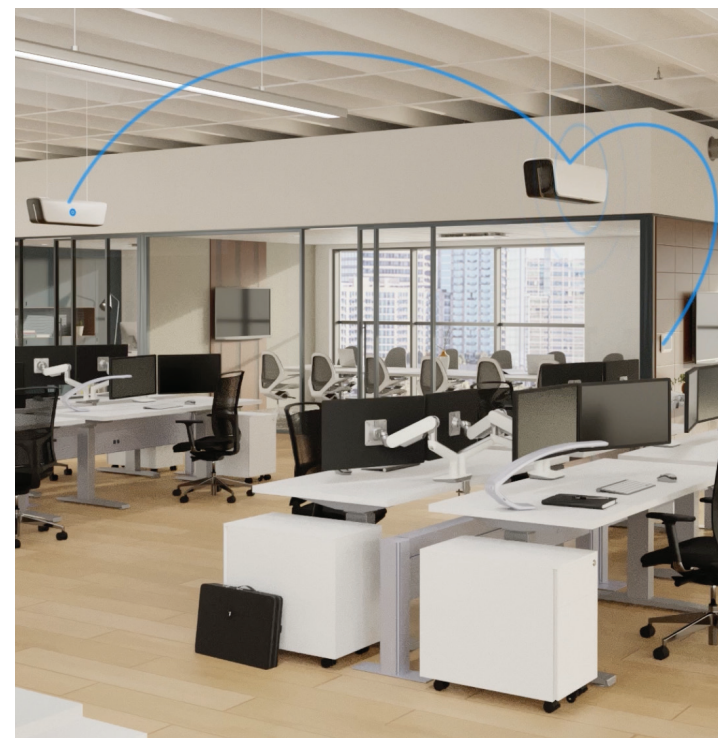


## Create Healthy Buildings

Array combines advanced filtration, intelligent automation, and real-time monitoring to create healthier buildings. With H13 True HEPA filtration, adaptive air management, and a centralized dashboard, Array ensures cleaner air and greater control over your indoor environment.

## Intelligent Sense and React Technology

Array's patented Sense and React technology, EnviroSmart+™, continuously monitors the environment for changes in occupancy density and space conditions, automatically adjusting units as needed. By sharing sensor data between units, Array enables a coordinated proactive response, ensuring optimal air quality across the entire space while alerting your team to IAQ changes in real time.

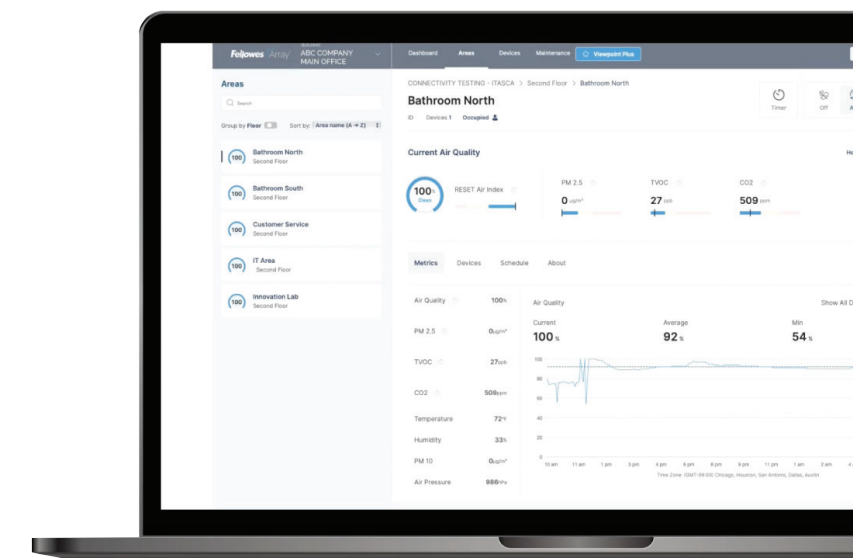


## Real-Time Data And Trend Visualization

Array's sensors continuously collect and transmit real-time air quality data, offering a clear picture of how air moves, degrades, and is ultimately purified. To make this data easy to interpret and act on, Array connects to Viewpoint, a secure, cloud-based dashboard where all IAQ insights come together.

With intuitive monitoring and display technologies, Viewpoint delivers real-time information on indoor air quality, including alerts, trends, and actionable insights. It's included with every Array device at no extra cost. All units connect securely across your building via LTE.\*

Harness the power of real-time IAQ insights and unlock even more operational efficiencies by bringing Viewpoint Plus data straight into your building's control system through BMS Integration.



## Supports Healthy Building Certifications







## Simple Implementation, Easy Operation

Array simplifies air quality management with a variety of installation options, easy scalability, and hassle-free maintenance. Its duct-free range of solutions fit any space, while real-time monitoring and intelligent automation ensure optimized IAQ with minimal effort.



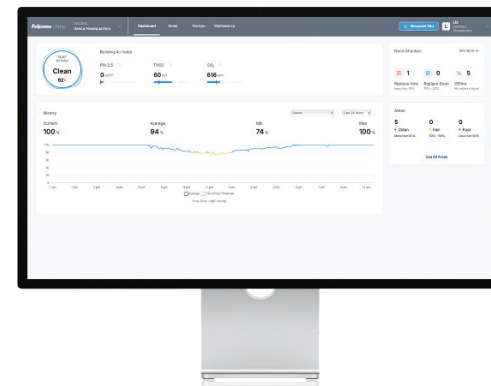
### Seamless Installation

Array air purification devices are designed to fit seamlessly into any space, providing localized air quality management throughout your building. No connection to ductwork is needed, making Array ideal for retrofits and new build projects alike.

Array's range of solutions are easily scalable, letting you add or change units throughout your facility at any time as IAQ needs change over time.

## Simple Integration

Viewpoint Plus data easily integrates into your BMS through a single gateway.



## Unique Capabilities

Array's unique BACnet write commands enables direct control of unit features.

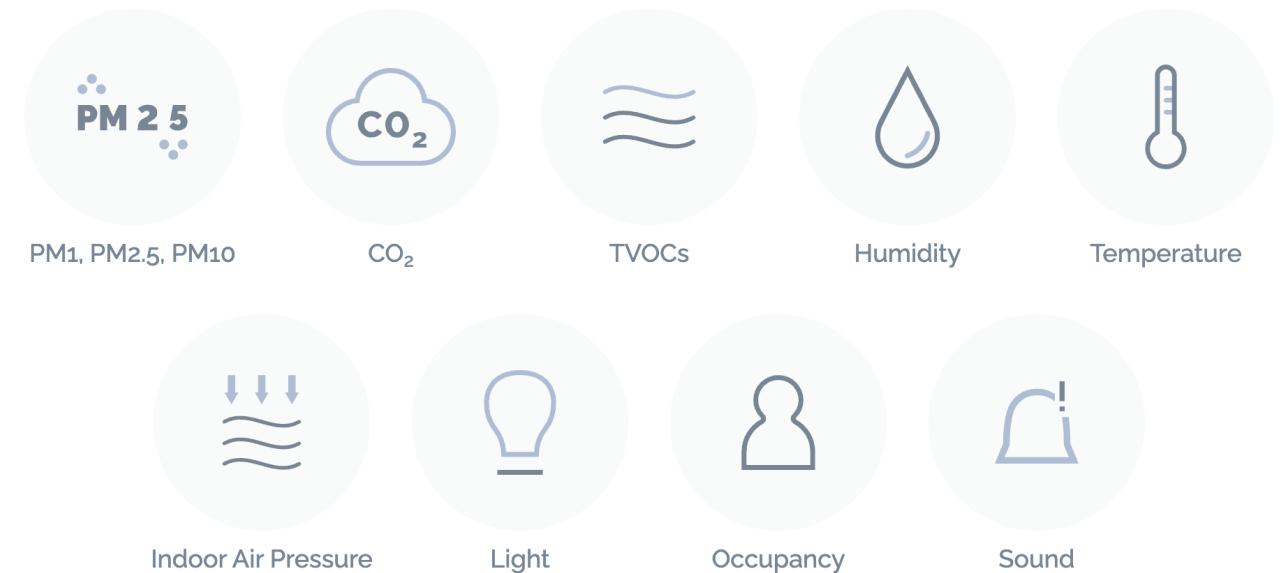
## Optimized Performance

Having a full suite of IAQ sensor data points integrated into your BMS helps optimize overall HVAC performance for greater IAQ control in each zone.



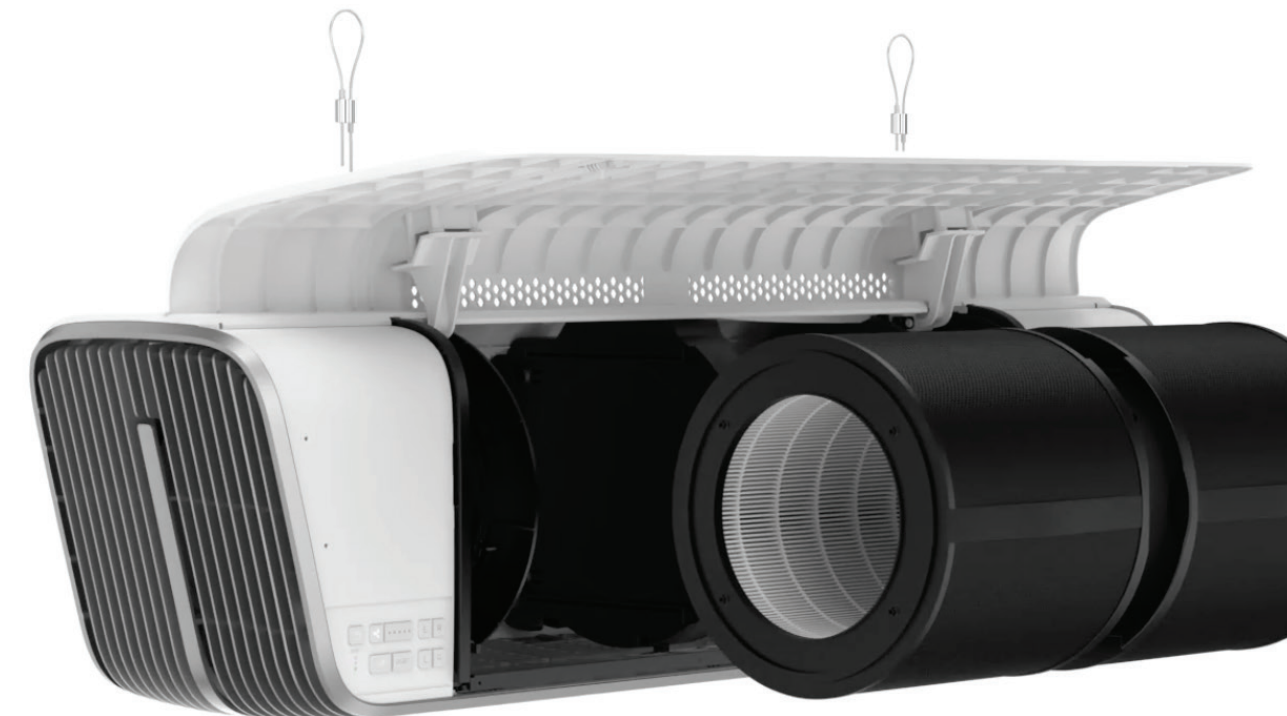
## Array Units Include a Full Suite of IAQ Monitor & Comfort Sensors

Array's advanced sensors comprehensively monitor air quality, environmental conditions, and occupant comfort to intelligently optimize indoor environments



## A Hassle-Free System

Array is hassle-free to maintain, with front access and tool-free annual filter replacement that can be performed by virtually anyone.





# Built For Your Building

The complete line of Fellowes Array products work together to provide an intuitive, coordinated response to your air quality circumstances – all designed with a clean, minimalist aesthetic.

Thanks to a range of configurations and installation options, Array is designed to complement and enhance any space.



**Array® Ceiling**  
Clean Air from Above



**Array® Lookout**  
The Invisible, Now Visible



**Array® Relay**  
Transmits data from Fellowes  
Viewpoint Plus to your BMS/BAS



**Array® Recess**  
High Performance, Low Profile



**Array® Recess UVC**  
Light-Powered Disinfection



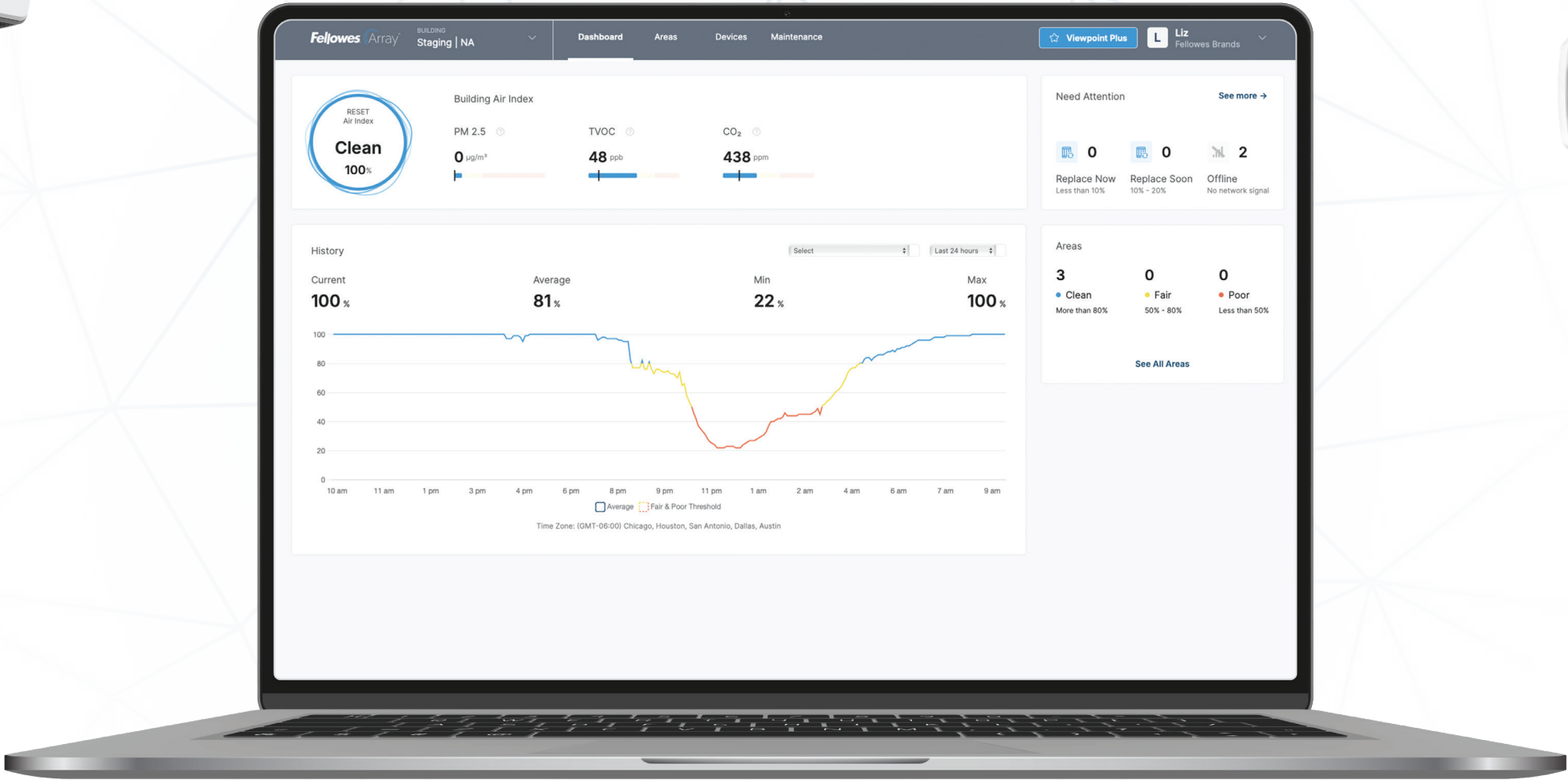
**Array® Wall**  
Wall to Wall Protection



**Array® Stand**  
Designed for Maximum Flexibility



**Array® Signal**  
Monitor Any Space



**Array® Viewpoint**  
IAQ data from your dashboard



# Fellowes Array Ceiling

AC2 Black Code:  
5889202



AC2 White Code:  
5889201



Integrate  
into BMS  
with Relay

## Clean Air from Above

Designed to integrate into open ceiling spaces

- Fellowes 3-in-1 filter (prefilter, carbon and H13 True HEPA filtration) is 99.95% effective in capturing molecules as small as 0.1 microns including viruses, allergens and germs and is designed to last for one full year
- Array Ceiling's energy efficient design includes our unique mixed flow fan, designed to maximize air flow while delivering quiet operation
- Suspends from ceilings as high as 20'
- EnviroSmart+™ Technology includes a full suite of comfort and control sensors to continuously monitor contaminants, room occupancy and noise levels and proactively respond to changes. Our integrated suite of indoor air quality (IAQ) sensors includes particulates (PM10, PM2.5, PM1), occupancy, temperature, humidity (RH), carbon dioxide (CO2), pressure, and TVOCs
- Access to the Array® Viewpoint cloud-based dashboard, designed to give users comprehensive visibility into their building's air quality, is included at no charge. All units connect through building-wide, secure LTE\*
- Designed and engineered for long term use backed with 5-year warranty

\*See back cover for details.



## Area Coverage

10 Foot Ceilings

3 ACH  
**1,430**  
Square Feet

5 ACH  
**858**  
Square Feet

12 Foot Ceilings

3 ACH  
**1,191**  
Square Feet

5 ACH  
**715**  
Square Feet





High Performance, Low Profile

Inconspicuous air filtration that beautifully integrates with the majority of standard grid ceiling systems.

- Fellowes 3-in-1 filter (prefilter, carbon and H13 True HEPA filtration) is 99.95% effective in capturing molecules as small as 0.1 microns including viruses, allergens and germs and is designed to last for one full year
- Array Recess AR2 includes dual filters
- Array Recess units' energy efficient design includes our unique mixed-flow fan, designed to maximize air flow while delivering quiet operation
- EnviroSmart+™ Technology includes a full suite of comfort and control sensors to continuously monitor contaminants, room occupancy and noise levels to proactively respond to changes. Our integrated suite of indoor air quality (IAQ) sensors includes particulates (PM10, PM2.5, PM1), occupancy, temperature, humidity (RH), carbon dioxide (CO2), pressure, and TVOCs
- Access to the Array® Viewpoint cloud-based dashboard, designed to give users comprehensive visibility into their building's air quality, is included at no charge. All units connect through building-wide, secure LTE\*
- Designed and engineered for long term use backed with 5-year warranty



AR1 Code: 5888601



AR2 Code: 5888901



BMS-Ready with Relay

Area Coverage

8 Foot Ceilings

3 ACH

750

Square Feet

5 ACH

450

Square Feet

3 ACH

1,500

Square Feet

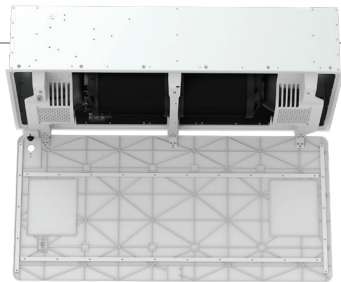
5 ACH

900

Square Feet

Recess AR1

Recess AR2



Array's hospital grade H13 True HEPA filtration is 99.95% effective in capturing molecules as small as 0.1 microns including allergens, viruses, and germs.

\*See back cover for details.





Wall to Wall Protection

Array™ Wall can be installed on a range of wall materials with minimal installation requirements.

- Clean, subtle design includes integrated Lookout display providing Air Quality status to users of an area
- Fellowes 3-stage filtration (pre-filter, carbon, and H13 True HEPA) Effectively removes at least 99.95% of particles as small as 0.1 microns, including allergens, such as pollen, dust, pet dander, and smoke
- Array AS2 and AW2 include dual hybrid filters
- Equipped with our EnviroSmart+™ Technology which includes a full suite of comfort and control sensors to continuously monitor contaminants, room occupancy and noise levels to proactively respond to changes. Our integrated suite of indoor air quality (IAQ) sensors includes particulates (PM10, PM2.5, PM1), occupancy, temperature, humidity (RH), carbon dioxide (CO2), pressure, and TVOCs
- Access to the Array® Viewpoint cloud-based dashboard, designed to give users comprehensive visibility into their building's air quality, is included at no charge. All units connect through building-wide, secure LTE\*
- Designed and engineered for long term use backed with 5-year warranty



AW2 Code: 5885101

AW1 Code: 5884801

Area Coverage

Wall AW1/Stand AS1

3 ACH  
600  
Square Feet

5 ACH  
360  
Square Feet

8 Foot Ceilings

Wall AW2/Stand AS2

3 ACH  
1,000  
Square Feet

5 ACH  
600  
Square Feet

8 Foot Ceilings

Designed for Maximum Flexibility

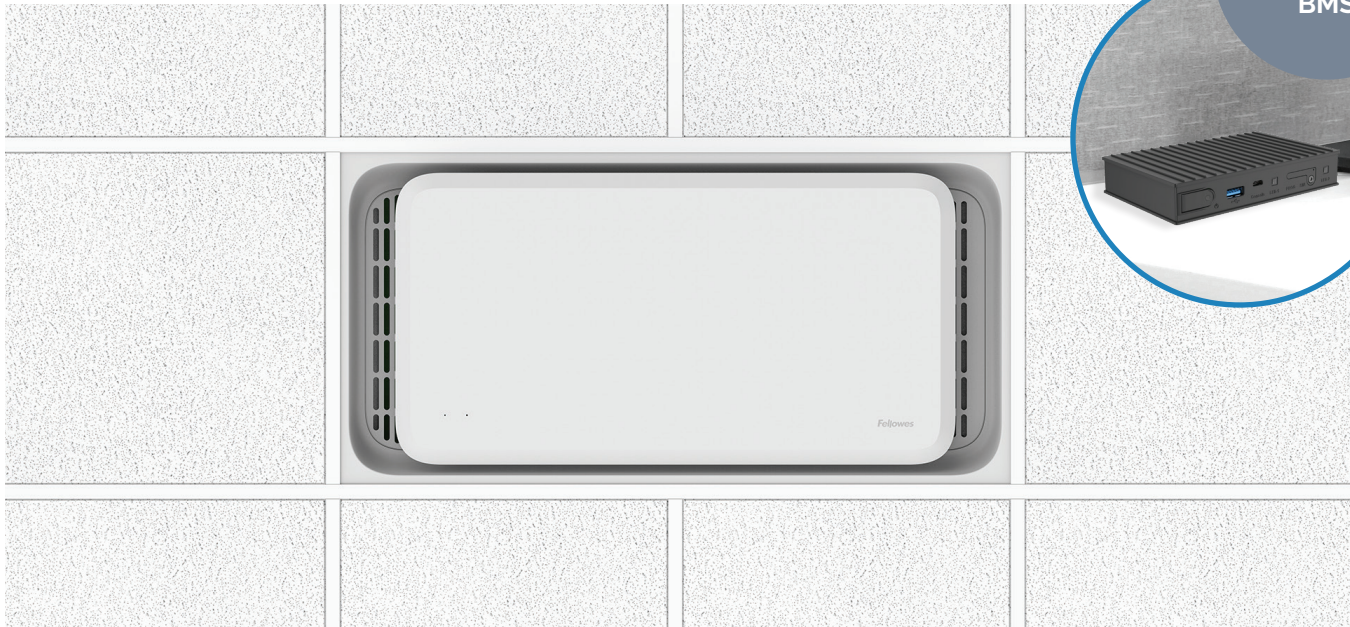
Array® Stand can be rapidly moved and repositioned wherever it is needed next, no installation required.

Integrate with BMS via Relay



AS2 Code: 5884501

AS1 Code: 5884201



Relay works with your BMS

Light-Powered Disinfection

Sophisticated flush-mount design seamlessly installs into double ceiling tile.

- Clean, subtle design offers integrated and seamless suspended installation in standard grid ceiling and is designed for occupied spaces. The self-contained UV-C chamber is hidden in the ceiling plenum
- Our proprietary and patent-pending ultra-high reflectivity chamber utilizes a shielded all metal chamber, designed to last for the life of the unit
- Array Recess UVC delivers up to 98.1% Single Pass Kill Rate\* and is specially designed to provide dedicated and continuous 24x7 ultraviolet protection against airborne bacteria, viruses, and mold, all while safely hidden overhead and out of sight.
- 9,000-hour bulb only needs changing once per year
- Includes a pre-filter that keeps the UV chamber free of dust and hair
- Bottom panel access for easy bulb and filter replacement
- Access to the Array® Viewpoint cloud-based



AR1 UVC Code: 5889501

Area Coverage

8 Foot Ceilings

3 ACH  
300  
Square Feet

5 ACH  
180  
Square Feet

dashboard, designed to give users comprehensive visibility into their building's air quality, is included at no charge. All units connect through building-wide, secure LTE\*\*

- Designed and engineered for long term use backed with 3-year warranty



Monitor Any Space

Signal provides remote monitoring for areas without a dedicated air purifier. Place in smaller offices, transitional areas, or anywhere else without proper ventilation or air monitoring.

- Our Signal monitoring device provides additional IAQ monitoring as part of your overall Array remediation network of air purifiers, or it can operate without connected air purifiers as a standalone IAQ monitor
- Our integrated suite of indoor air quality (IAQ) sensors includes particulates (PM10, PM2.5, PM1), temperature, humidity (RH), carbon dioxide (CO2), pressure, and TVOCs
- Signal connects through building-wide, secure LTE to the Array Viewpoint cloud-based dashboard at no charge. Viewpoint gives users comprehensive visibility into their building's air quality\*
- Sleek design to integrate into your building, offered in both in-wall mount and desktop options
- Designed and engineered for long term use backed with 3-year warranty



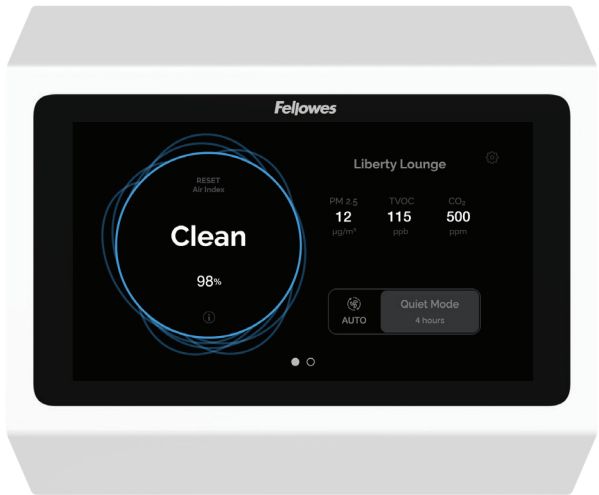
Plug Code: 5885401



In-Wall Code: 100067648



Sensor Data  
can integrate  
into BMS with  
Relay



Wall Code: 5885901  
Stand Code: 5885801

The Invisible, Now Visible

Lookout's wall-mounted display shows precise air quality status and filtration progress. Now, anyone can have confidence that their office, room, or workspace is safe.

- With Lookout, you can control Array units assigned to a designated area
- Includes a Quiet button that puts all units in the same room into Quiet Mode
- Lookout offers a sleek design to integrate into your Array units, offered in both wall mount and desktop options
- Lookout connects through building-wide, secure LTE to the Array Viewpoint cloud-based dashboard at no charge. Viewpoint gives users comprehensive visibility into their building's air quality\*
- Designed and engineered for long term use backed with 3-year warranty



Integrates  
with BMS  
via Relay





Data-Informed Decisions

Designed with facilities and operations managers in mind, Viewpoint provides comprehensive air quality data for all of your connected spaces from an easy-to-use dashboard, available with every Array device at no charge. All units connect through building-wide, secure LTE.\*

Track trends, monitor energy usage, and evolve your air quality strategy – all from one place.

Viewpoint features include:

- Sensor Sharing between units assigned to an area
- Remote Array unit controls
- Current RESET Air Index at the building, area, or device level
- Device status and filter change notifications
- Multi-level Viewpoint Account Management

Additional features included with Viewpoint Plus subscription service:

- Timers and scheduling for any unit in your system
- Current and historical data to analyze trends and identify IAQ concerns
- Data export capabilities
- Unit maintenance notifications and advanced troubleshooting
- Real-time filter life measurement and replace history
- Community dashboard
- BMS integration



Fellowes® Relay

Relay is the Fellowes Array gateway that connects your air quality system directly into your building management system (BMS) via BACnet/IP. It delivers real-time data and enables unique control of Array units including; power, fan speed, Quiet Mode, filter resets, and AQI light settings from a single interface.



BACnet ® is a trademark of ASHRAE





Specs		Array Ceiling AC2		Array Recess AR1			Array Recess AR2		
Area Coverage (sqFT)		Ceiling Height (ft)		Ceiling Height (ft)			Ceiling Height (ft)		
		10	12	8	10	12	8	10	12
eACH	1	4,290	3,575	2,250	1,800	1,500	4,500	3,600	3,000
	3	1,430	1,191	750	600	500	1,500	1,200	1,000
	5	858	715	450	360	300	900	720	600
Product code		W: 5889201, B: 5889202		5888601			5888901		
Fan Speeds (CFM)		136, 186, 333, 504, 715		60, 80, 134, 201, 300			114, 153, 264, 391, 600		
Sound pressure levels, each fan speed (dB)		29, 31, 43, 48, 56		24, 26, 33, 44, 50			26, 27, 36, 47, 54		
Power Requirements (V/Hz/A)		AC120V/60Hz/1.2A		AC120V/60Hz/0.8A			AC120V/60Hz/1.5A		
Power Consumption (Watts)		11, 13, 24, 26, 120		7, 8, 13, 24, 62			9, 12, 23, 45, 120		
EnviroSmart+™ Technology (particulates (PM10, PM2.5, PM1), occupancy, temperature, humidity (rH), carbon dioxide (CO2), pressure, and TVOCs)		✓		✓			✓		
IoT Connectivity		LTE		LTE			LTE		
Warranty		5		5			5		
Product Dimensions (L x W x H) (in)		49 x 12.7 x 14.3		23.4 x 23.4 x 12.4			47.3 x 23.6 x 12.4		
Weight (lbs)		47		40.3			76.1		
Electrical Connection		Plug		Hardwire			Hardwire		
UL507		✓		✓			✓		
CARB		✓		✓			✓		
FCC		✓		✓			✓		
EN1822M		✓		✓			✓		
H1N1		✓		✓			✓		
Rhinovirus		✓		✓			✓		
SARS-CoV-2		✓		✓			✓		

Protect your Purifier!

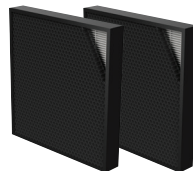
To ensure stated performance and efficacy of your Fellowes air purifier, only use genuine Fellowes branded filters. Off-brand filters may damage and affect the performance of your unit and void your unit's warranty.



Filter Type	3-in-1 360° (Pre-Filter, Carbon, H13 True HEPA)	3-in-1 360° (Pre-Filter, Carbon, H13 True HEPA)	3-in-1 360° (Pre-Filter, Carbon, H13 True HEPA)
Filter Code	5890102	5890101	5890102
Filter Rating	H13 True HEPA	H13 True HEPA	H13 True HEPA
Filter Efficiency	99.95% @ 0.1 microns	99.95% @ 0.1 microns	99.95% @ 0.1 microns
Antimicrobial Coating	✓	✓	✓
Estimated Filter Life	1 Year	1 Year	1 Year



Specs		Array Recess AR1 UVC			Array AW1 & AS1			Array AW2 & AS2		
Area Coverage (sqFT)		Ceiling Height (ft)			Ceiling Height (ft)			Ceiling Height (ft)		
		8	10	12	8	10	12	8	10	12
eACH	1	900	720	600	1,800	1,440	1,200	3,000	2,440	2,000
	3	300	240	200	600	480	400	1,000	800	666
	5	180	144	120	360	288	240	600	480	400
Product code		5889501			5884801 (AW1), 5884201 (AS1)			5885101 (AW2), 5884501 (AS2)		
Fan Speeds (CFM)		120			68, 90, 110, 140, 240			120, 150, 200, 260, 400		
Sound pressure levels, each fan speed (dB)		43			AS1: 29, 34, 38, 44, 57 AW1: 28, 33, 38, 44, 56			AS2: 28, 34, 39, 45, 58 AW2: 27, 33, 37, 44, 58		
Power Requirements (V/Hz/A)		AC120V/60Hz/0.9A			AC120V/60Hz/0.9A			AC120V/60Hz/1.5A		
Power Consumption (Watts)		77			8, 11, 16, 28, 107			10, 14, 23, 41, 173		
EnviroSmart+™ Technology (particulates (PM10, PM2.5, PM1), occupancy, temperature, humidity (rH), carbon dioxide (CO2), pressure, and TVOCs)		—			✓			✓		
IoT Connectivity		LTE			LTE			LTE		
Warranty		3			5			5		
Product Dimensions (L x W x H) (in)		47.2 x 23.3 x 11			20.9 x 9.7 x 19.6 (AW1) 20.9 x 10.2 x 22.8 (AS1)			34.7 x 9.4 x 19.7 (AW2) 34.7 x 10.6 x 22.8 (AS2)		
Weight (lbs)		62.6			20 (AW1), 25 (AS1)			35 (AW2), 40 (AS2)		
Electrical Connection		Hardwire			Hardwire (AW1), Plug (AS1)			Hardwire (AW2), Plug (AS2)		
UL507		✓			✓			✓		
CARB		✓			✓			✓		
FCC		—			✓			✓		
EN1822M		—			✓			✓		
H1N1		✓			✓			✓		
Rhinovirus		✓			✓			✓		
SARS-CoV-2		—			✓			✓		



Filter Type**	UVC Bulb Bundle**	Hybrid Filter (Carbon, H13 True HEPA)	Hybrid Filter (Carbon, H13 True HEPA)
Filter Code	(Bundle) 100016527	9436902	9436902
Filter Rating	—	H13 True HEPA	H13 True HEPA
Filter Efficiency	Up to 98.1% Single Pass Kill Rate***	99.95% @ 0.1 microns	99.95% @ 0.1 microns
Antimicrobial Coating	—	✓	✓
Estimated Filter Life	1 Year/9000 Hours	1 Year	1 Year

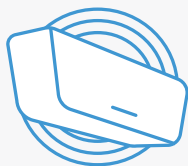
\*\* Includes Pre-Filter  
\*\*\*Based on 98.1% Single Pass Reduction in Staphylococcus epidermidis bacteria. The term "Kill" is used to represent the inactivation of pathogens from the UV-C light.





To learn more about Array, visit  
[New.Fellowes.com/Array](https://New.Fellowes.com/Array)

## Fellowes: A Global Leader In Localized Indoor Air Quality Solutions



### We Know Air Purification

With over 15 years dedicated to breakthrough innovation, scientific testing, and unparalleled customer experience, Fellowes has become the leader in commercial IAQ.



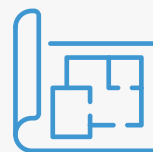
### Quality, Performance, and World-Class Customer Service

Fellowes is a private, family-owned manufacturing business. Established in 1917, now in our 4th generation of leadership.



### Designed and Engineered in the U.S.

Designed and engineered in our Itasca, IL headquarters, Fellowes proudly provides proprietary IAQ solutions across the globe.



### Customized Planning and Pricing

Every project matters. Customized space planning, pricing, and services available through our IAQ experts.



Scan to access the Viewpoint  
Terms & Conditions

BRO-773G

To contact a Fellowes® service representative, call 800-477-7940  
© 2025 Fellowes, Inc.

**Fellowes**

**FAMILY BUSINESS  
SINCE 1917**