



INTELLIGENT AIR QUALITY

The **ONLY** BMS Integrated Air Purification & Monitoring System

Fellowes Array includes an integrated, breakthrough range of air purifiers, sensors, and monitoring software that can be connected to form a complete network for healthy air in any room, floor or space.

Array delivers seamless integration to unlock greater control over real-time IAQ insights. This empowers smarter decisions to reduce costs and optimize efficiency across your entire building.



Raise Your IAQ with Fellowes Array: The Smart Way to Improve Indoor Air Quality While Saving Energy Costs, Giving You More Control of Your Space



Energy Cost Savings

Array enhances indoor air quality while reducing energy demand. With high-efficiency filtration and reduced reliance on energy-intensive ventilation, it supports HVAC efficiency, lowers costs, and delivers cleaner air without unnecessary strain on your system.



Healthy Buildings

Array combines advanced filtration, intelligent automation, and real-time monitoring to create healthier buildings. With H13 True HEPA filtration, adaptive air management, and a centralized dashboard, Array ensures cleaner air and greater control over your indoor environment.



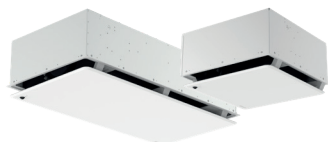
Simple Implementation, Easy Operation

Array simplifies air quality management with a variety of installation options, easy scalability, and hassle-free maintenance. Its duct-free range of solutions fit any space, while real-time monitoring and intelligent automation ensure optimized IAQ with minimal effort.

Built For Your Building

The complete line of Fellowes Array products work together to provide an intuitive, coordinated response to your air quality circumstances – all designed with a clean, minimalist aesthetic.

Thanks to a range of configurations and installation options, Array is designed to complement and enhance any space without any connection to duct work.



Array® Recess

High Performance, Low Profile

Inconspicuous air filtration that beautifully integrates with the majority of standard grid ceiling systems.

Code: AR1 5888601
Code: AR2 5888901



Array® Recess UVC

Light-Powered Disinfection

Sophisticated flush-mount design seamlessly installs into double ceiling tile.

Code: 5889501



Array™ Ceiling

Clean Air from Above

Designed to integrate into open ceiling spaces.

Code: White 5889201
Code: Black 5889202



Array® Wall

Wall to Wall Protection

Array™ Wall can be installed on a range of wall materials with minimal installation requirements and includes our Lookout display.

Code: AW1 5884801
Code: AW2 5885101



Array® Stand

Designed for Maximum Flexibility

Array™ Stand can be rapidly moved and repositioned wherever it is needed next, no installation required and includes our Lookout display.

Code: AS1 5884201
Code: AS2 5884501



Array® Viewpoint

Data-Informed Decisions

Access to Array™ Viewpoint, designed to give users comprehensive visibility into their building's air quality, is included at no charge. All units connect through building-wide, secure LTE.



Array® Lookout

The Invisible, Now Visible

Lookout's display shows precise air quality status and filtration progress. Now, anyone can have confidence in their workspace's air quality.

Code: Wall 5885901
Code: Stand 5885801



Array® Signal

Monitor Any Space

Signal provides remote monitoring for areas without a dedicated air purifier. Place in smaller offices, transitional areas, or anywhere else without proper ventilation or air monitoring.

Code: 5885401



Array® Relay

The Gateway to Integrate Viewpoint Plus

BACnet/IP enabled gateway transmits data from Fellowes Viewpoint Plus to your BMS/BAS.

Code: 100136553



BACnet® is a trademark of ASHRAE

Filters & Bulbs

Fellowes Array AF1 3-in-1 360° Filter
- 1PK Code: 5890101

Fellowes Array AF1 3-in-1 360° Filter
- 2PK Code: 5890102

Fellowes Hybrid Filter (for Wall and Stand units) - Code: 9436902

Fellowes Pre-filter & UVC Bulb Bundle
- Code: 100016527

Fellowes UVC Bulb
- Code: 100016526

Fellowes Array AR1 UVC Pre-Filter
- 2PK Code: 1000165307