



Triumph™ LX

Electric Height Adjustable Table Base



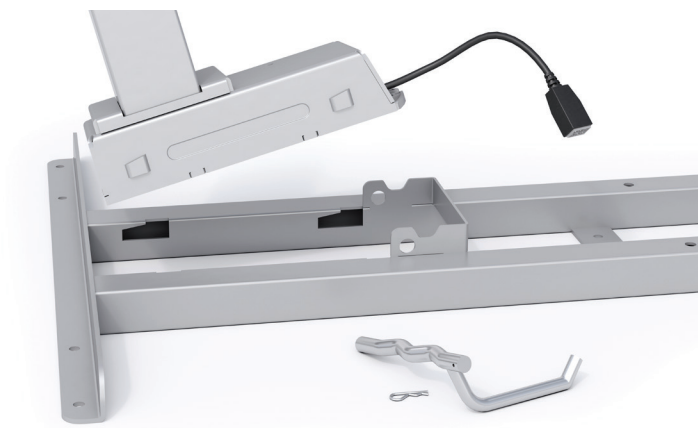
Available Base Finishes

- Silver - SLV
- Black - BLK
- White - WHT

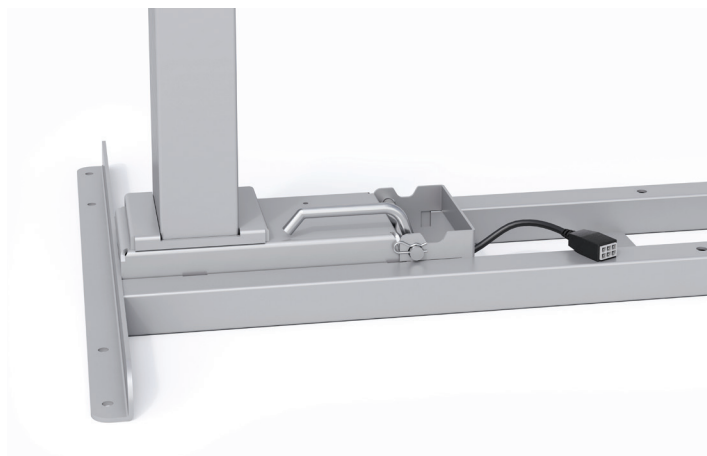
Product Specs

- Electric height adjustment
- 250 lb. base lifting capacity
- 1.4"/sec. adjustment speed
- 17.0" height adjustment range
 - 26.5"-43.5"(low/high)
 - (excluding worksurface)*
- Two stage adjustable legs
- C-leg
- Frame and column connect and lock for quick and easy assembly
- Adjustable width frame accommodates worksurfaces 36.0"-72.0"
- Two motors
- Digital keypad with three memory settings
- Soft start and stop
- Gyro sensor anti-collision
- Locking casters are available
- ADA compliant
- 8'9" power cord
- Steel frame and foot construction
- Works with peds or storage with 23.5" max. height
- Low standby power consumption
- Meets or exceeds BIFMA x5.5 guidelines
- Keypad can slide under worksurface to store out of the way
- Complete tables available
 - (base and top)*

Triumph™ LX



Connect and Lock Pre-Assembly



Connect and Lock Assembled

Caster Kit

- Set of casters for table base
- Increases height by 2.0"
- Locking casters for security

Model # CASTERKIT-LX-2LEG



Locking Caster



Drawers Easily Slide Over Feet



Digital 3 Memory Keypad

Triumph™ LX

Complete Model # Breakdown

2T_-R4824-QS-T__
| | | | | | | | |
a b c d e f g h i

a: number of legs
b: type of table base
c: finish of base
d: worksurface shape
e: worksurface width
f: worksurface depth
g: quick ship indicator
h: laminate material
i: laminate color

48.0" x 24.0" Quick Ship

Complete Table

- TriumphLX 2-Leg Table Base with a 48.0" w x 24.0" d rectangle TFL worksurface

Model # 2T--R4824-QS-T-

60.0" x 30.0" Quick Ship

Complete Table

- TriumphLX 2-Leg Table Base with a 60.0" w x 30.0" d rectangle TFL worksurface

Model # 2T--R6030-QS-T-

 base finish notation  laminate color notation

Available Base Finishes

-  Silver - S
-  Black - B
-  White - W

Available TFL Quick

Ship Laminates

-  Beigewood - BG
-  Phantom Charcoal -PC
-  Shadow Oak -SO
-  Designer White -DW
-  Grey -GR
-  Dove Grey -DV

TriumphLX Table

- Quick ship complete table options include: silver, black, or white table bases; 48.0"w x 24.0"d or 60.0"w x 30.0"d rectangle worksurfaces; all six TFL laminates. Quick ship worksurfaces will be pre-drilled to accommodate the TriumphLX table base.
- For all other combinations, please call our Customer Service Department for the estimated lead time and cost.
- Multiple worksurface shapes and laminates are available. See Complete Table and Worksurface Guide for worksurface details including laminate colors.

Triumph™ LX

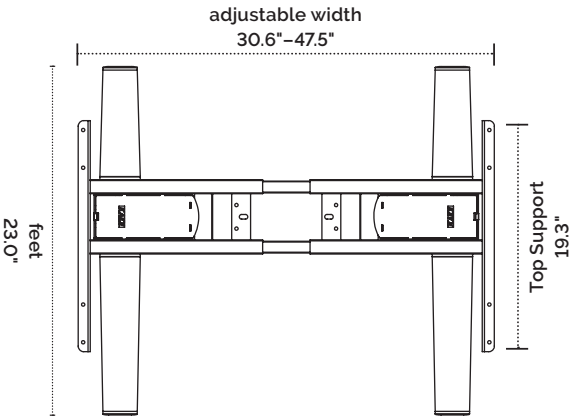
Table bases			Available worksurfaces				
Table base model	Worksurface shape	Worksurface dimension	TFL standard		HPL standard	HPL premium	
			Quick ship	Standard ship	Standard ship	Standard ship	
2T-LX-C36-24-__	<div><div></div><div>D</div><div>W</div><div>Rectangle</div></div>	36"w x 24"d	—	2R3624-TFL-__	2R3624-HPL-__	2R3624-PHPL-__	
		42"w x 24"d	—	2R4224-TFL-__	2R4224-HPL-__	2R4224-PHPL-__	
		48"w x 24"d	2R4824-QS-TFL-__	2R4824-TFL-__	2R4824-HPL-__	2R4824-PHPL-__	
2T-LX-C48-24-__		60"w x 24"d	—	2R6024-TFL-__	2R6024-HPL-__	2R6024-PHPL-__	
		72"w x 24"d	—	2R7224-TFL-__	2R7224-HPL-__	2R7224-PHPL-__	
2T-LX-C36-30-__		36"w x 30"d	—	2R3630-TFL-__	2R3630-HPL-__	2R3630-PHPL-__	
		42"w x 30"d	—	2R4230-TFL-__	2R4230-HPL-__	2R4230-PHPL-__	
		48"w x 30"d	—	2R4830-TFL-__	2R4830-HPL-__	2R4830-PHPL-__	
2T-LX-C48-30-__		60"w x 30"d	2R6030-QS-TFL-__	2R6030-TFL-__	2R6030-HPL-__	2R6030-PHPL-__	
		72"w x 30"d	—	2R7230-TFL-__	2R7230-HPL-__	2R7230-PHPL-__	

Worksurface Program

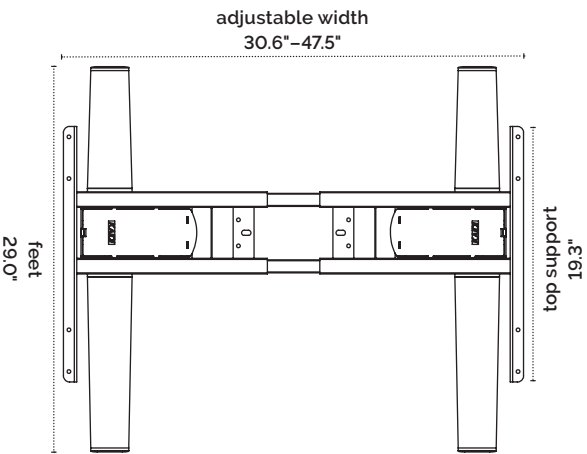
- Multiple worksurface shapes and laminates are available. See the Complete Table & Worksurface Ordering Guide for worksurface details including pricing and laminate colors. TFL quick ship worksurfaces are shipped out in 48 hours, TFL standard and HPL standard/premium worksurfaces ship within three weeks. Lead time may vary depending on quantities ordered and their availability
- Table bases and worksurfaces can be purchased independently or as a combination.
- Fellowes worksurfaces are made to exact dimensions. If nominal sizing is needed, please specify when ordering.

Triumph™ LX

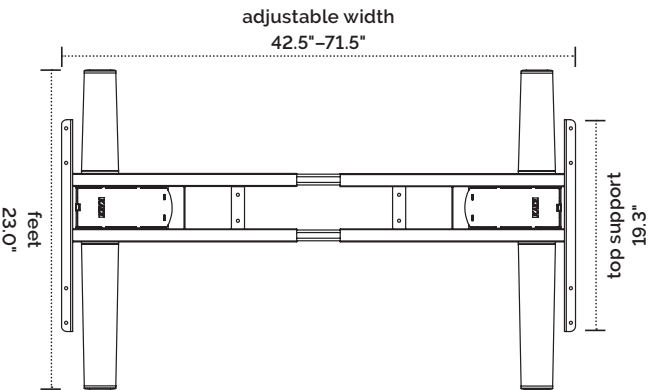
2T-LX-C36-24



2T-LX-C36-30



2T-LX-C48-24



2T-LX-C48-30

